

Anna Whitley

watercrayon.com

whitley.anna@gmail.com

(828) 423-4604



Objective

To practice good design in a team environment.

Experience

2008–present

Multimedia Production Artist, Train of Thought Marketing

Built employee training demos, LG Electronics

Created vector art

<http://share.totmarketing.com/lg/3340/swf/index.html>

2006–2007

Director of Programming & Graphic Designer, The Peoples Channel

Scheduled, compiled, and aired daily programming

Branded, produced, and printed materials

2005–2006

Graphic Designer, Assistant, Duke University Press

Created printed marketing materials, booth exhibition

Cocreator journals database website, HighWire Press

<http://dukejournals.org/>

1997–2008

Apprentice, Easy Street Leather & Pottery

Expedited stoneware process, sewed handbags

Ran craft booth, sales register

www.leatherandpottery.com

2004

Teaching Assistant, NCSU College of Design, Exiting Workshop

Communicated syllabus under Gonzales Crisp

Contacted and verified firms

2001–2002

Arts and Crafts Director, Camp Counselor, Camp Albemarle

Developed curriculum for 5-16 year olds, week overnight sessions

Taught a range of skills such as transfer printing and macramé

2005

Bachelor of Graphic Design

North Carolina State University

College of Design, Raleigh, NC

2003

University of Reading

Studied Abroad

Visited firms in London,

Operated hand letter press and

experimented with automated press

Honors

Scholar Athlete, Varsity Rifle Team

Dean's List, Overall GPA 3.2/4.0

Skills

Branding, typography, illustration,

story boarding, animation, editing,

offset printing, screen printing,

exhibition design, photography,

HTML, CSS, Mac/PC

Programs

Adobe Creative Suite, Aftereffects,

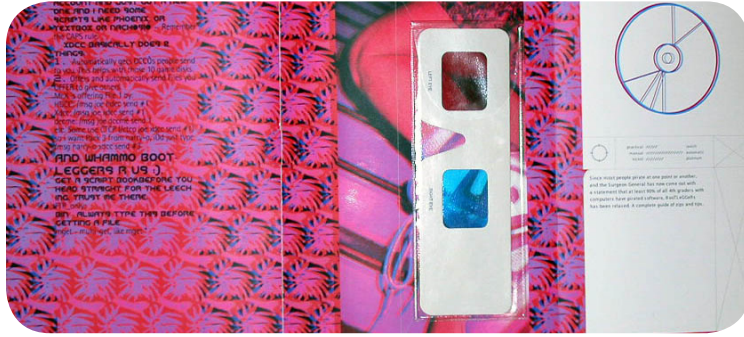
Adobe Flash, Dreamweaver, Finalcut

Pro, Microsoft Office, Garageband

Present Affiliations

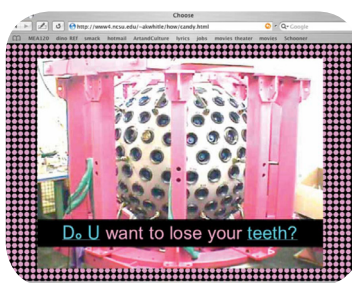
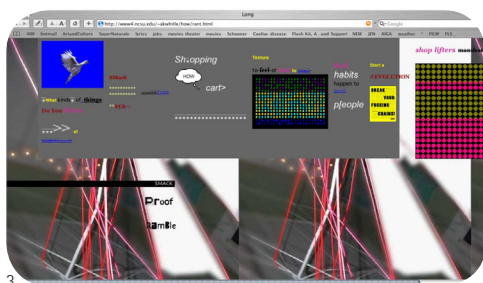
Alliance for Community Media

ALIGA, The Peoples Channel



1. Solutions 2.1

This 36 page full color bound catalog is full of the perfect products. These hypothetical solutions deliver a practical approach to familiar everyday hardships. As a collaborative project, Mia Blume and I created these time saving devices to provide you with the tailored luxury you have always deserved but never knew where to look.



2. Extreme Interactive Poster

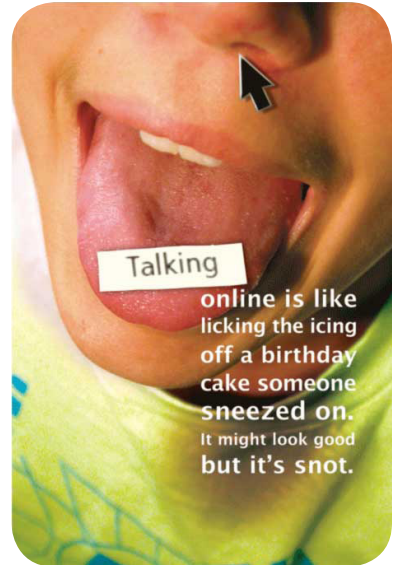
This large poster draws the viewer in with the promise that quick surgery and drugs are the answer. The reader stands in front of the poster and places their hands on the wall. *Step 1: Lean in, Step 2: Repel, Step 3: Repeat.* The audience does a standing push-up. Physical activity is the most effective method to help overweight children. American children spend too much time watching TV and playing video games instead of exercising. The magic weight loss drug does not exist. This poster gives facts while interacting in a physical manner.

3. Webzine—SMACK!

The website's visuals are based on the instantaneous nature of today's internet. Here you will find a constant bombardment of knowledge, spam-like imagery, and links. This webzine evokes feelings of urgency and direction. Any type of user click reveals a piece of the puzzle. At the end of the page you are asked "Do you want to lose your teeth?" This is the entrance point to the relationship of the imagery. The connection explains what eating candy, being social smoker, and lying about the effects of Depleted Uranium have in common—people under-report how much they do things that are bad for themselves.



watercrayon.com



Predator Poster

This is a campaign presented to local middle schoolers as a follow up to Predator Awareness Week. It reminds students to be cautious when chatting with everyone online with and to sign off as soon as they feel uncomfortable or threatened.

Anna Whitley

watercrayon.com

whitley.anna@gmail.com

(828) 423-4604



References

Chad Johnston

The Peoples Channel, *Manager*

(919) 960-0088

johnston@thepeopleschannel.org

Ruth Cobb

Train of Thought Marketing, *Manager*

(919) 816-7288

ruth.cobb@totmarketing.com

Denise Gonzales Crisp

NCSU, *Professor*

(919) 515-8361

denise_crisp@ncsu.edu